

New TA Queue for The University of Utah - College of Engineering

TA's often play a vital role in a student's academic success. A queue helps simplify and organize the time that a TA spends with students.

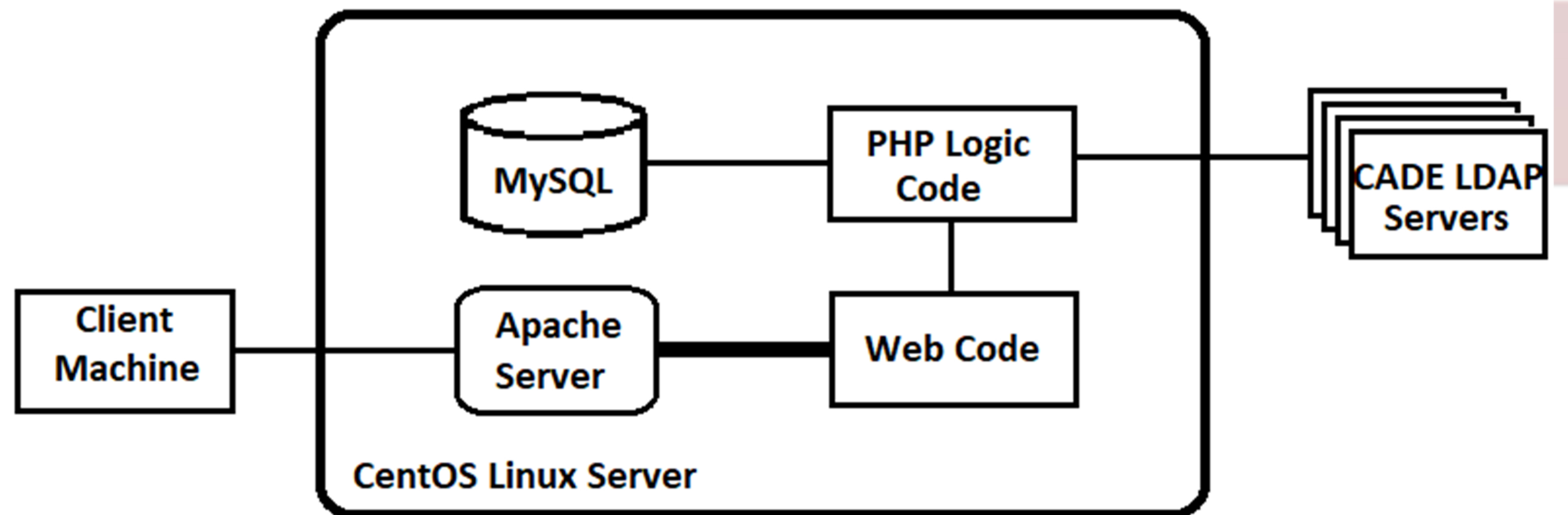
New features and an enhanced UI make our queue a more flexible and seamless experience.

TECH STACK

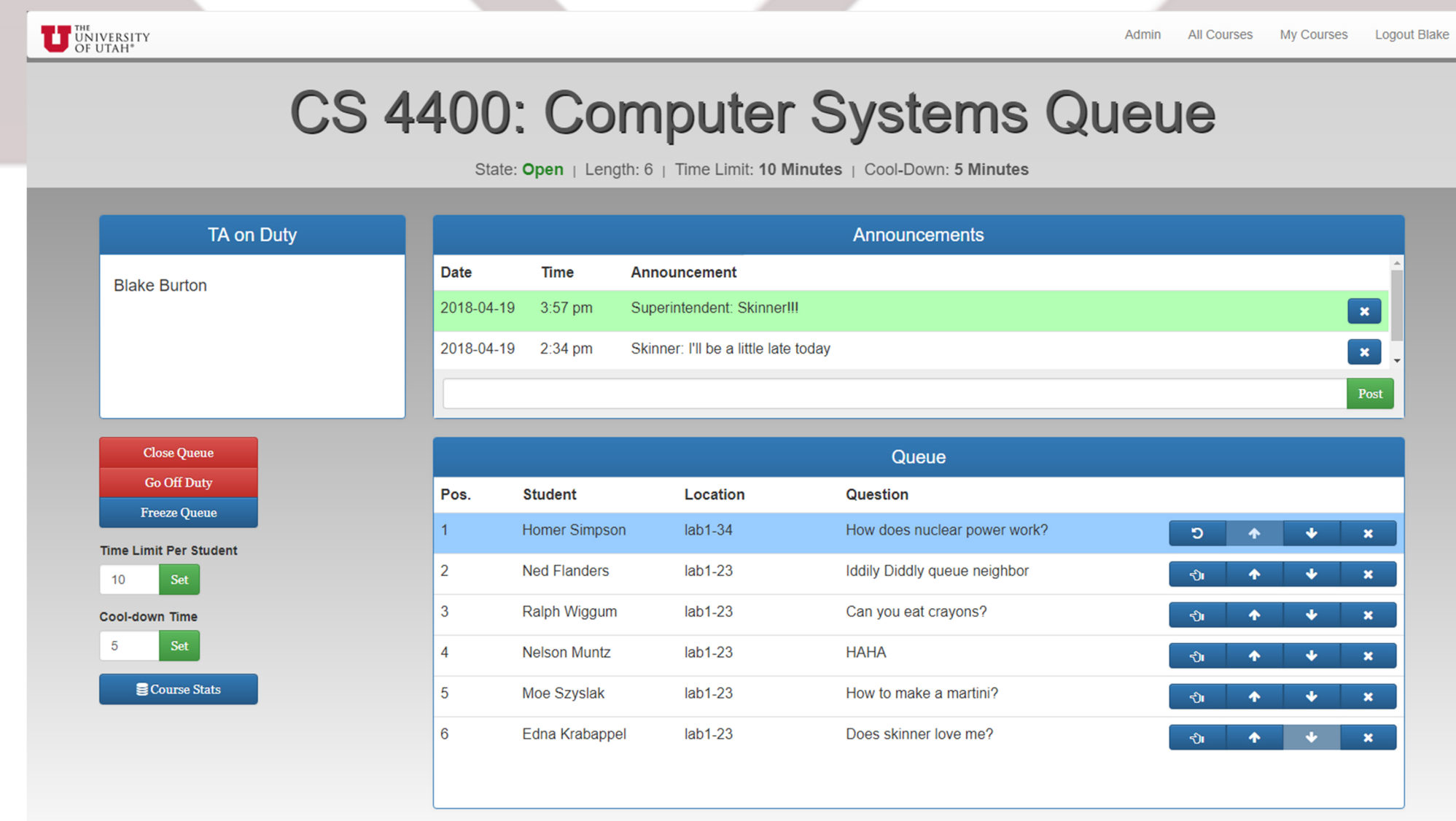
We elected to go with an easy to understand tech stack, both to simplify current design and to make future design and maintenance easier.



We interface with the CoE LDAP servers for user authentication, as well as role verification. We have scripts written to enable auto-deployment of the server on any machine within the CADE cluster.

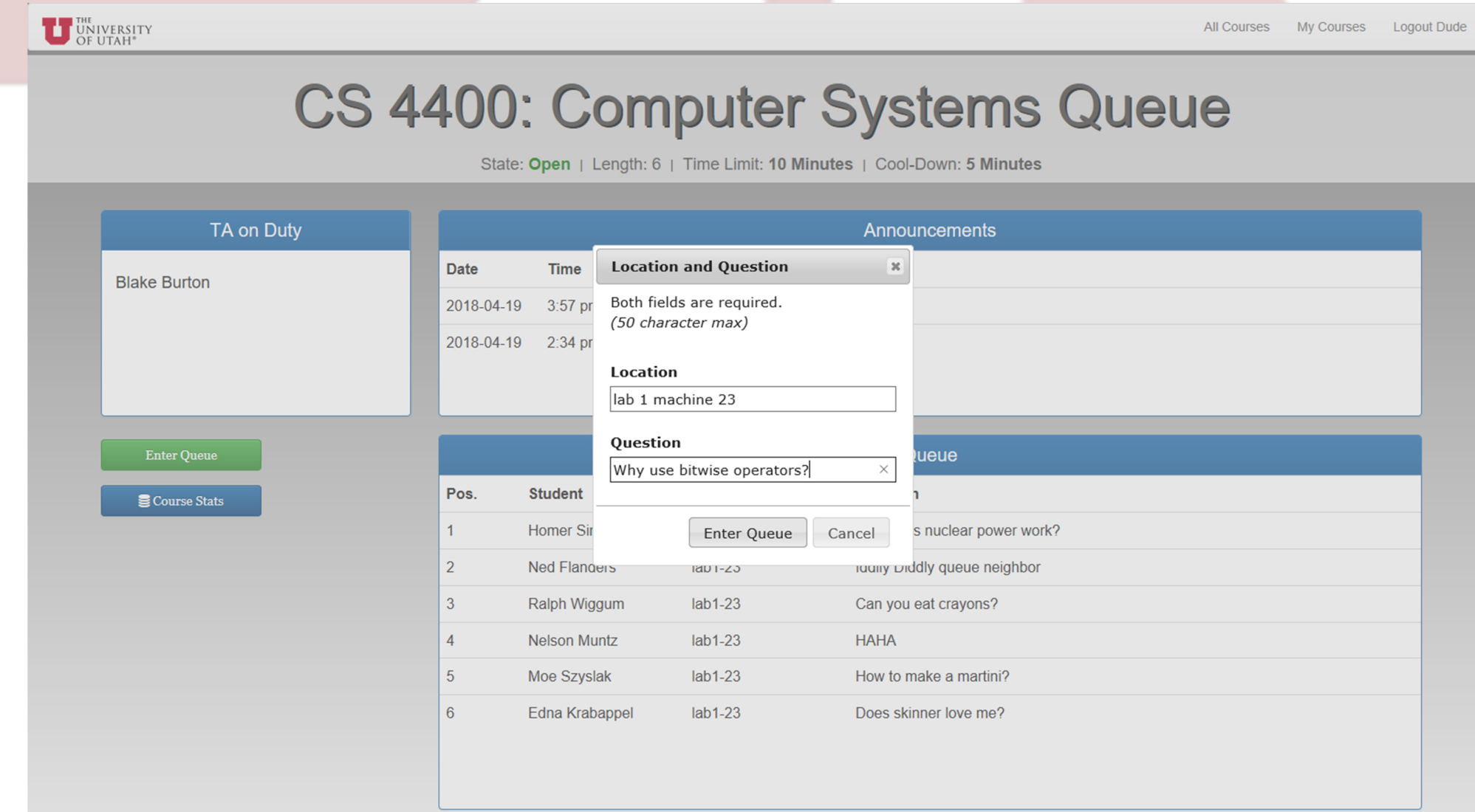


TA VIEW

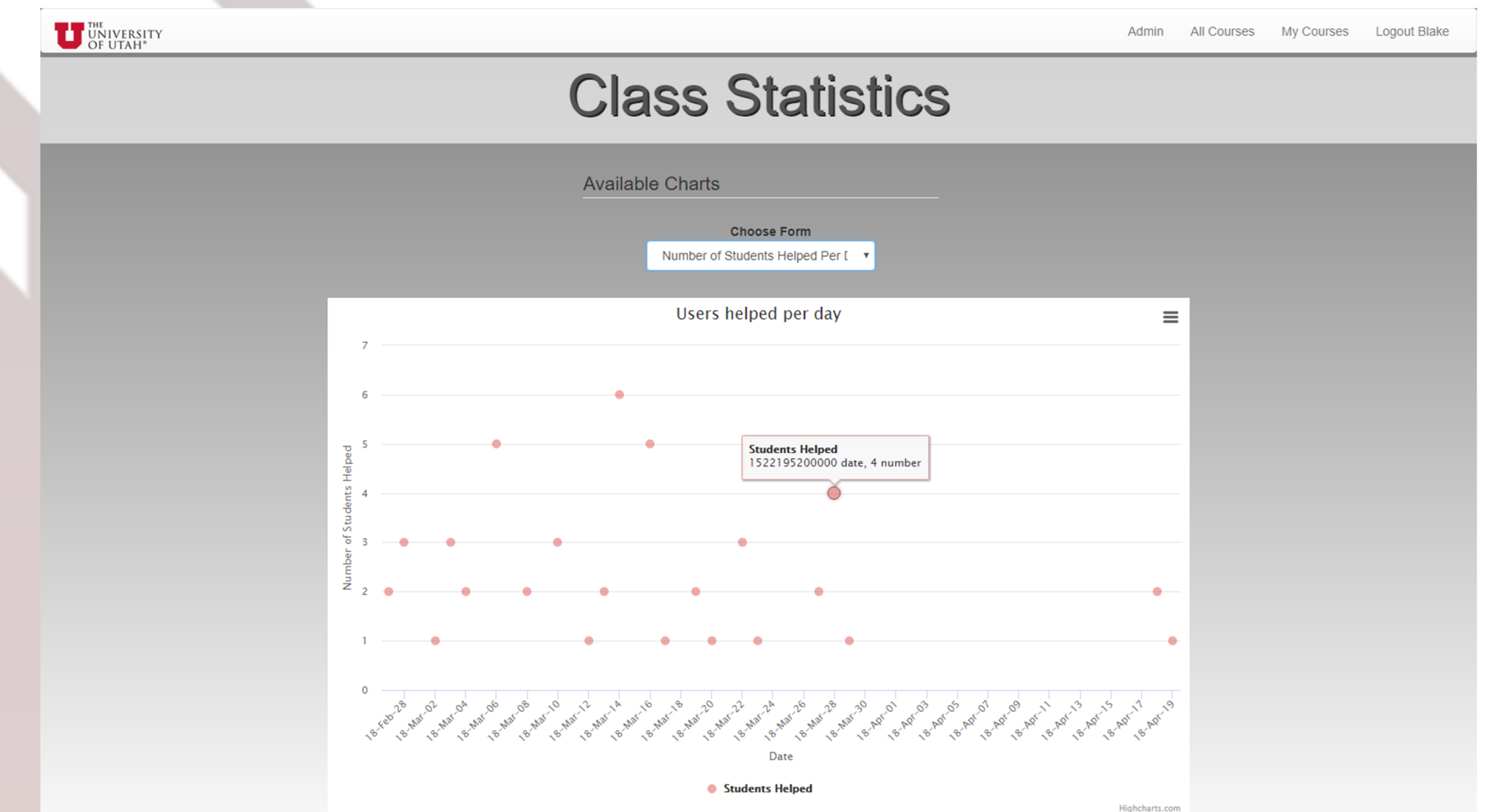


- New Features
- authentication using existing CADE credentials
 - TA queue re-ordering ability
 - TA/faculty announcements
 - adjustable time limits per student
 - queue access codes
 - usage logs and statistics

STUDENT VIEW

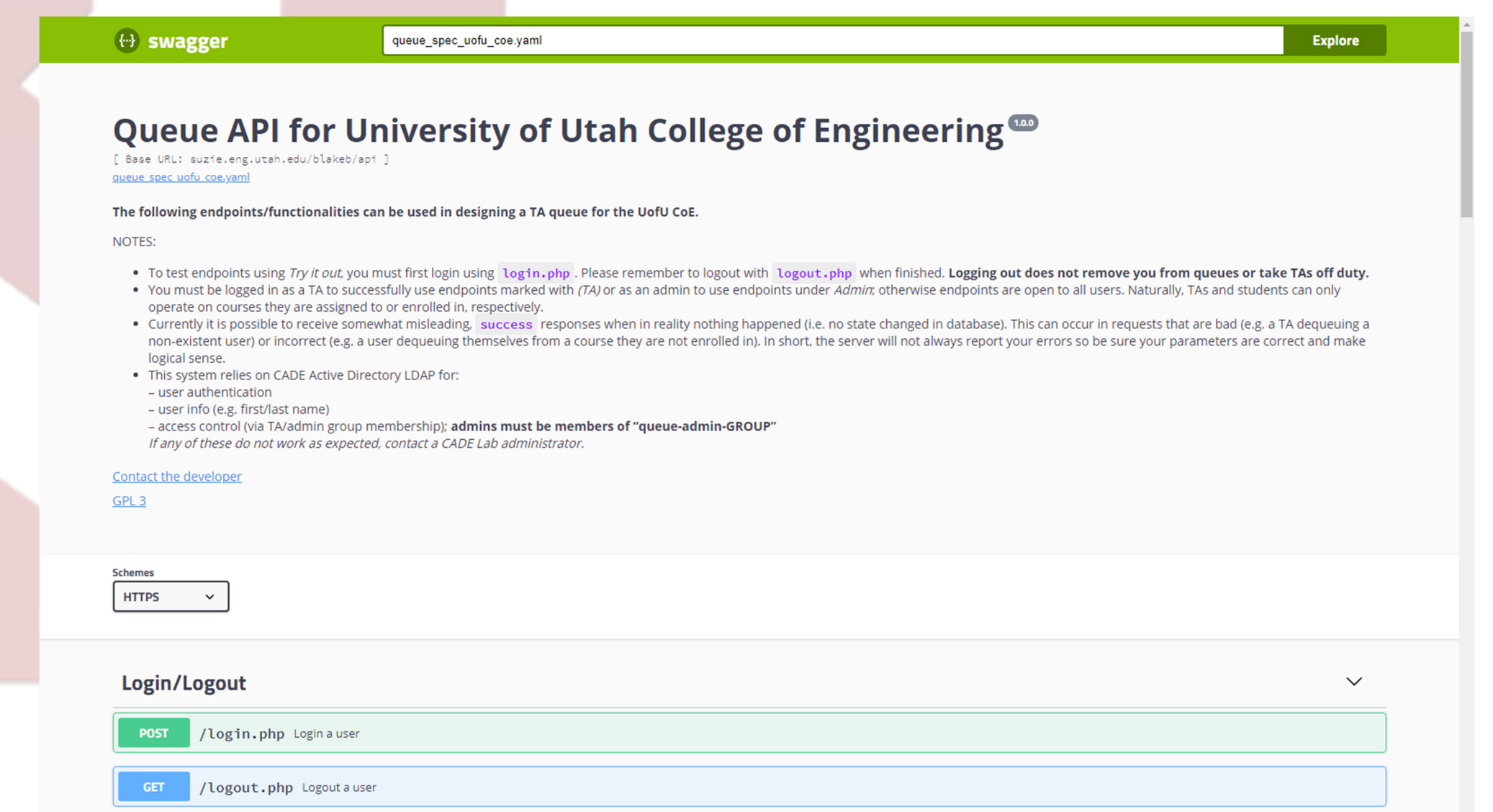


STATISTICS



- Public API
- clear documentation via Swagger
 - clean separation of logic and interface
 - easy integration w/ new interfaces

PUBLIC API



Blake Burton
 Ryan Welling
 Zane Zakraisek
 H. James de St. Germain - Advisor